

Eagle^{PC-8T}

19" Rack Mount Data Processing Module



HGL
Dynamics



Control | Acquire | Process

Key Features

- Robust and Lightweight (< 8kg)
- Intel Core i7 Xeon Quad Core CPU
- Low power (110-250 V ac 35W)
- Can Support 32-64 Acquisition Channels
- 5 x Gigabit Ethernet Network Ports
- 2x HDMI Digital Graphics
- 6 x USB Ports (2 x USB 3)
- 8TByte SSD Data Storage
- 256GByte SSD Operating System / Software Drive

Eagle^{PC-8T}



19" Rack Mount Data Processing Module

Connect

19" Rack Mount

Standard 2U Mounting Holes
Requires no rails

Robust Chassis

Milled Aluminium Chassis

Illuminated Power Switch



Performance

- Intel Core i7 XeonCPU
- 8 GByte RAM

2 x USB2 Ports

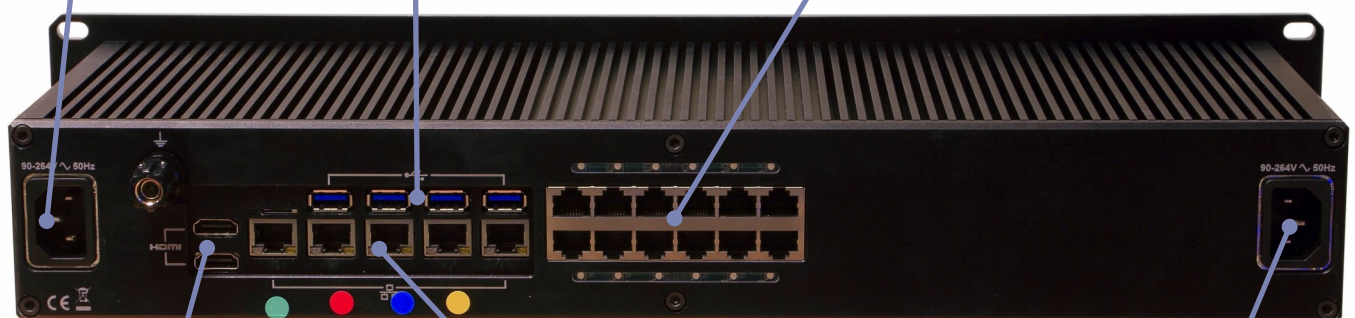
Flexible Power

- 110-250 V ac
- 50/60 Hz

4 x USB3 Ports

Adaptable Network Topologies

Built in 12x1 (or 6x2) Port Gigabit Switch



2x HDMI Graphics

Adaptable Network Topologies

FiveGigabit Network Ports allows for multiple application topologies.

Flexible Power

- Dual Redundant Supplies
- 110-250V ac
- 50/60Hz



19" Rack Mount Data Processing Module

Software Overview

Data Acquisition - Hawk

HGL's Hawk acquisition software provides everything a user needs to configure, calibrate and acquire data from the acquisition hardware. Full control and feedback of the system is provided by the Hawk GUI Client application; this provides an intuitive instrument-like interface that allows even novice users to operate large channel count systems, even from remote locations.



Real-Time Monitoring - Hawkeye

Hawkeye allows one or more users to monitor the signals being acquired in real-time (<0.1s latency).

Fully customisable displays such as FFTs, Waterfalls, Oscilloscopes, Numerical, Speed and Tracked-orders, Phase, Bode, Orbit, nth Octave etc, provide a rich monitoring environment.

Hawkeye also provides Time, Frequency, Order and Phase domain alarming facilities for all channels simultaneously, with support for many different alarms types per channel. Hawkeye is also client / server based with the 'thin' Hawkeye Client allowing local or remote monitoring (performance dependent on network



Analysis - Aurora

Aurora provides an in-depth analysis tool for acquired data; this is usually required post-test, but can be operated simultaneously with testing if useful. Post-test analysis can pinpoint areas of interest / problems to be further investigated, and for this purpose Aurora provides a range of client / server based tools to analyse, investigate, mine, summarise and report on acquired data.

Multiple users can use Aurora simultaneously, and in common with HGL software portfolio access is via a network connected thin-client (Aurora Client) application, thus allowing both local and (potentially widely) remote users to access data simply and



Data Storage & Archiving - Hercules

Prolonged or large-scale data acquisition generates a lot of data, 10's and 100's of TBytes are not unusual for large enterprises. Data is expensive to collect and the functionality to efficiently store and retrieve legacy data is essential for in-service investigations, product development etc.

HGL's Hercules software provides an integrated, low-cost, yet highly scalable and safe data management solution for any sized data acquisition operation. The key to the system's success is support for virtually any common media type (SD cards, HDD/SSDs, LTO tapes etc.) combined with a unique database architecture providing simple, yet highly efficient data storage information, and a client/server architecture which allows data to be managed across multiple remote sites from a single intuitive Graphical User Interface.



Eagle^{PC-8T}



19" Rack Mount Data Processing Module

Specification

General

Dimensions (W x H x D):	450 x 89 x 200 mm
Weight:	8 kg (typical)
Supply Voltage:	110-250V ac 50/60Hz
Power:	35.0 W (typical)

Environmental

Operating Temp.:	-25 to 40°C
Storage Temp:	-40 to 85°C

Features

Processor:	Intel Core i7 (Quad Core)	Network:	5 x 1000BaseT Ports
Memory:	8GByte DDR3		12 x 1000BaseT Switched Ports
Storage:	120-260 GByte SSD (OS & S/W)	USB:	4 x USB3
	8 TByte SSD		2 x USB2 (front)
OS	Microsoft Windows 10		
S/W	HGL Hawk & Hawkeye OR		
	HGL Aurora Analysis		
	HGL Hercules Data Management		

UK & International

HGL Dynamics Ltd
Hamilton Barr House
Bridge Mews
Godalming
GU7 1HZ
UK

Tel +44 1483 415177

North America

HGL Dynamics Inc
6679 Corporate Circle
Indianapolis
IN 46278
USA

Tel +1 317 782 3500

France

HGL Dynamics France
13 Place du Renard
79700 MAULEON
France

Tel +33 6 78 94 74 07

South Korea

HGL Dynamics South Korea
768 Posvill Officetel
Gumi-dong, Bundang-gu
Seongnam-si
Gyeonggi-do
Korea
483-861

Tel +82 109 052 2638



FS72209



Company registered in England No. 3844513